



# Werrington Public School

## Term 1 Week 2, 4th February 2019

### Dates for your calendar!

#### 7th February

Swimming Carnival:  
Competitors Only

#### 8th February

P&C Meeting 2pm  
Staffroom

#### 13th February

Author Visit Matt  
Cosgrove  
K - 2 Assembly

#### 20th February

3 - 6 Assembly

#### 21st February

Yarramundi AECG  
Meeting 4pm at  
Cambridge Park PS

#### 27th February

K - 2 Assembly

#### 28th February

Zone Swimming

#### 6th March

3 - 6 Assembly

#### 13th March

K - 2 Assembly

#### 20th March

3 - 6 Assembly

#### 21st March

Harmony Day - Drum  
Beats Performance

#### 27th March

K - 2 Assembly

#### 3rd April

3 - 6 Assembly

#### 4th April

School Photos



## Principal's Message



Dear Parents and Caregivers,

### Staffing 2019

Today is our first full day in our 2019 classes, with lots of new connections to made. We have seen a slight increase in school numbers this year with the formation of a 17<sup>th</sup> mainstream class, which brings us to 22 classes across the school.

### Contacting Teachers

As always, the first contact for parents when they have any concerns or questions about their child is the classroom teacher. You may organise to see your child's class teacher by contacting the office, sending in a note, or having a quick chat with the teacher to find a suitable time.

From time to time, questions or concerns may need to be escalated to the assistant principals. Please contact the assistant principals through the office to make an appointment. The assistant principals are as follows:

Kindergarten: Miss Clark (including all of K/1GK)  
Stage 1 (Years 1 and 2): Mrs Mason  
Stage 2 (Years 3 and 4): Mrs Young (including all of 2/3D)  
Stage 3 (Years 5 and 6): Mr Bale (including all of 4/5V)  
Support unit: Mr Henningham

Matters that have not been resolved at the classroom teacher or assistant principal level may be escalated to our instructional leader/deputy principal, Ms Proglgio or to me. Please contact the office to make an appointment if this is required.

### P&C Meeting

Our first P&C Meeting will be this Friday 8th February at 2pm in the staffroom. We welcome all our parents and carers and hope that you can join us at this time.

### Playground Before School

A quick reminder that supervision in the COLA commences at 8.40am during this time students are to be seated in the COLA or on the seats beside the office. Morning playtime commences at 8.55am, with classes commencing at 9.10am. There is no supervision before 8.40am and students should not be arriving before this time.

### Contact Details

If you have recently moved or changed your contact details in any way, please ensure that you let our office know so that our records can be updated, this also includes any emergency contact details.

Address  
School Email

Werrington Public School, Armstein Crescent, WERRINGTON NSW 2747  
werrington-p.school@det.nsw.edu.au

Phone 02 9623 7077

### Student Absences

Please contact the office by phone or text message (if you have the skoolbag app) or email, if your child is absent from school. Our office staff are following up on all absences, so it is most helpful if you let us know on the day of the absence.

For extended leave such as family holidays, please contact the office for a leave form.

### Nut Allergies

As you may be aware, there are children in our school who have a life-threatening allergy to nuts and nut products. Please assist us to keep these children safe at school by not sending in foods that contain nuts to school with your child. Items that are labelled “may contain traces of nuts” are fine to send in. Please also speak with your child about the importance of not sharing food and drink at school.

### Staff Professional Learning

Regularly, teachers and staff undertake professional learning to keep up to date with the latest theory, research and practice in education. Many of these are held after school hours! These sessions have included:

- All staff Sentral induction;
- All staff Code of Conduct training; and
- All staff Child Protection Training.

Have a great fortnight,

Mrs Avery  
Principal

*“Learning is a treasure that will follow its owner everywhere.”*

## Attendance Information 2019

Welcome to our new families and welcome back to all of our existing families. Below is some key information regarding your child’s attendance at school. Please read and follow this information carefully.

- If your child is absent due to illness or a family emergency, please provide an explanation in one of the following ways within 5 school days:
  1. Write a note or provide a doctor’s certificate and give to the classroom teacher
  2. Call the office on the day of the absence, with an expected date of return
  3. Send a message to the school through the Skoolbag app
  4. OR, if required, speak directly to your child’s teacher about the absence
- If your child is absent for more than two days in a row, you must contact the school with an explanation why they are absent.
- If you are planning a holiday during the school term, please advise the school in writing or by coming to the office before the planned trip.

Many thanks,  
Mrs Young  
Attendance Assistant Principal





## **Office News**

### **Note day**

Notes will be sent home on Monday. The newsletter will be sent home fortnightly. All notes that are sent home will also be placed on the school website each Tuesday.

### **Student Banking**

The students at Werrington have the service of student banking through the Commonwealth Bank. Banking day will be Thursday. Students need to drop their bank book to the office before school and it will usually be returned to them before the end of the day. Information packs are available from the office.

### **Uniforms**

Attached is the current uniform order form. Uniforms are available to purchase at any time through the school office. We have a small supply of the polo shirts that Back to Basic use to sell. These are the lemon polo shirts with an embroidered crest and they also have a fine navy line through the collar. Please refer to what we have in stock and if you would like to purchase any of the goods you will need to come into the office. These items will be sold on a first in first served basis.

	<b>Polo shirts</b>		
<b>Size</b>	<b>Quantity Available</b>		<b>Cost</b>
4	5		\$5.00
12	12		\$5.00
16	18		\$5.00
S	3		\$5.00

We also have 10 Library bags that have the school logo on them, these are also at a cost of \$5.00

### **Medication**

If your child needs to have medication at school we request that this is sent in to the school office in a blister pack. The chemist is able to do this when you have your child's prescription filled.

### **Contact Details**

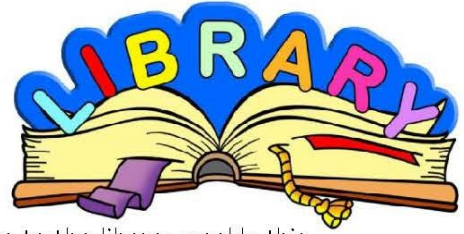
At the start of the year, we always update our contact numbers and details for the classroom teachers. If you have changed your contact numbers, including your emergency contacts, please let the office staff know so we can update your records. There is an information update sheet attached. Thanks!

### **Skoolbag App**

The school has decided to continue with the skoolbag app. This app is now available for all devices. Attached is an information sheet on how to download the app. If you have any problems or questions please come and see me.

Mrs Moses  
School Manager

## Library 2019



Welcome to the library for 2019. Students will start coming to the library weekly this term.

Each student in K-6 will be required to have a library bag that they **bring each week** to borrow and return books. Library bags are available to buy at the library for \$2 or a material shopping bag is all that is required.

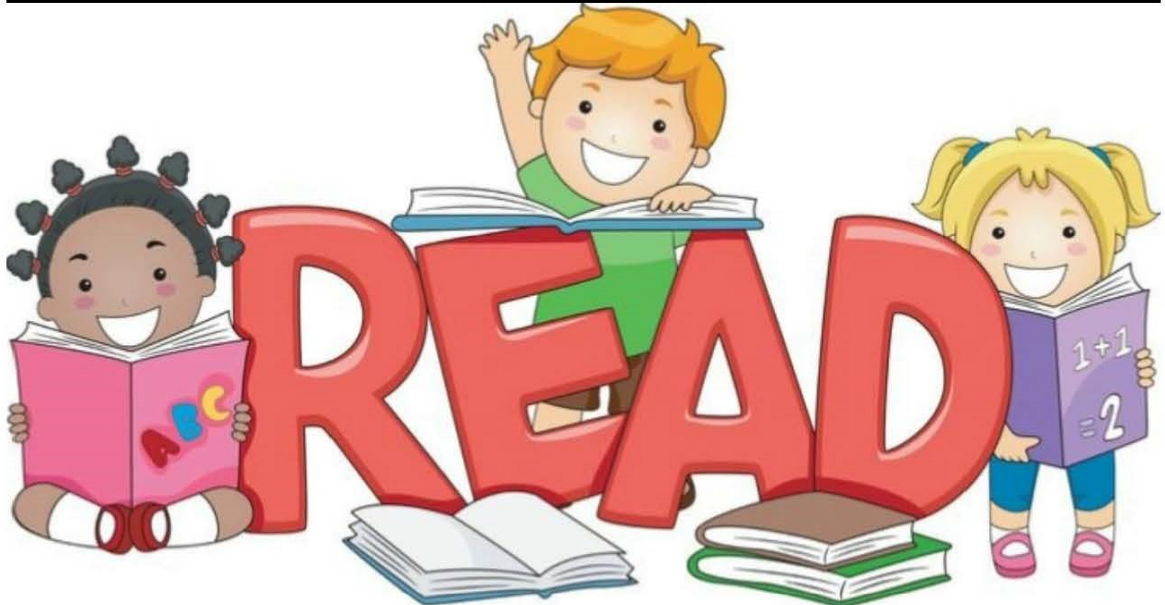
During library time students will be reading to complete the Premier's Reading Competition with **all students K-6** expected to complete it by the end of 2019.

Please note that library books are considered a shared experience and students are not expected to independently read the books until they are in years 3-6 where they should choose a book appropriate to their reading level.

In library time students will also be completing activities related to the new digital technology curriculum. This includes things like coding and robotics.

I look forward to working with your child this year.

Janette Buchan  
Teacher Librarian



## P & C News

Welcome back everyone! We hope you had a lovely break and are ready for a busy and successful 2019!

A special welcome to the new kindergarten families, it is lovely to see all the beautiful children happily settling in to school.

*You're  
Invited*

Our first P & C meeting will be held on Friday 8<sup>th</sup> February at 2pm in the staffroom.  
All positions will be declared open.

If you are interested in one of these positions please see one of the committee members to have a chat about what a rewarding experience supporting your child or grandchildren's school in this way can be.

We fully understand how busy life can be with both work and family commitments. If you are not able to attend meetings but have any suggestions, we welcome you to email [werringtonpandc@gmail.com](mailto:werringtonpandc@gmail.com), leave a message at the office or contact our current P & C President Tanya Lemaire on 0408 672 958

We look forward to seeing you at our next meeting.

Thank you for your support  
P & C Committee





## WERRINGTON PUBLIC SCHOOL

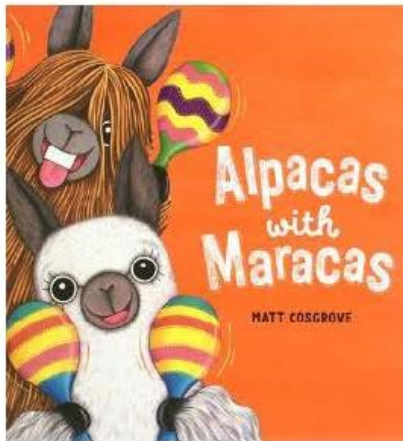
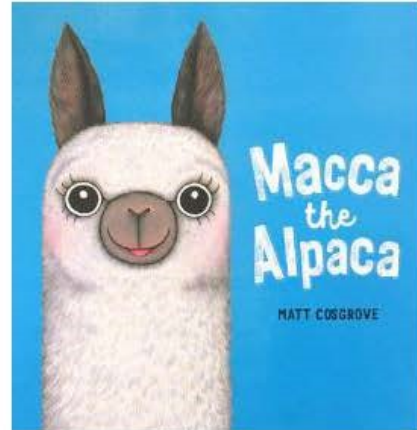
Arm stein Crescent  
PO Box 4100  
WERRINGTON NSW 2747

Phone: 9623 7077  
Fax: 96231339  
Email: [werrington-p.school@det.nsw.edu.au](mailto:werrington-p.school@det.nsw.edu.au)

On Wednesday 13<sup>th</sup> February we are so fortunate to have author Matt Cosgrove come to visit our school and talk to all the students.

Matt is an author and illustrator of many children's books including the latest 'Macca the Alpaca' series.

We are asking for a **\$2 gold coin donation** on the day for the students to come and hear Matt talk.

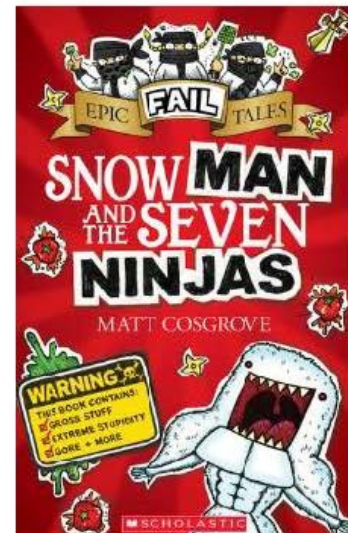
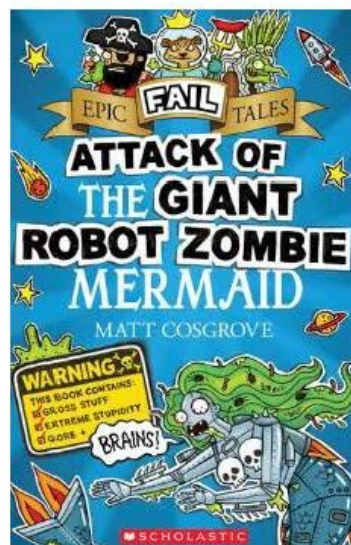


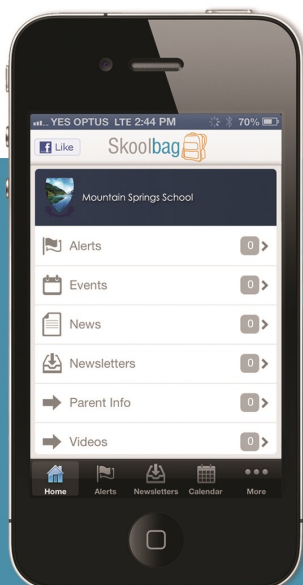
On the day students can wear orange, lime, yellow and/or aqua accessories to help get the fiesta happening.

We are also holding a colouring in competition. Each sheet costs 50c and when students return their colouring in they will receive a ticket in the prize draw to win copies of Matt Cosgrove's books. Please visit the stand under the K-2 COLA to buy an entry sheet. They will be on sale before school or visit the library at recess or lunch to purchase sheets.

Thank you for your support of this learning opportunity.

Mrs Buchan and Mrs Robar





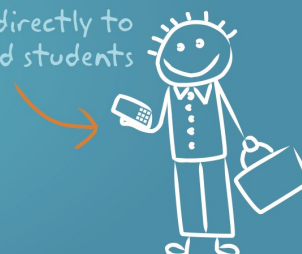
# Skoolbag

Smartphone school to parent communication

Skoolbag is a mobile App for your school to communicate directly to both parents and students. It works through both smart phones and smart devices (such as iPads and Android Tablets). Ideal for:

- > School, free push notification alerts
- > School events
- > School newsletters
- > School documents
- > School RSS feeds
- > School social media (Facebook, Twitter)

*Skoolbag delivers school notices directly to parents and students*



## How To Install Skoolbag On Your Smartphone

### iPhone & iPad Users

1. Click the "App Store" icon on your Apple device.
2. Type your school name in the search, using suburb name will help.
3. If iPhone, you will see your school appear, click "Free" then "install".
4. If iPad, change the drop list to "iPhone Apps", your school will then be visible, click "Free" then "install".
5. When installed click "Open"
6. Select "OK" to receive push notifications, when asked.
7. Click the "More" button on the bottom right of the App, then "Setup".
8. Toggle on the Push Categories that are applicable for you.




### Android Users

You must first have signed up with a Google Account before installing the app.

1. Click the "Play Store" button on your Android Device
2. Click the magnifying glass icon at the top and type in your school name, using suburb name will help.
3. Click the school name when it appears in the search.
4. Click the "Install" button.
5. Click "Accept" for various permissions (please note, we do not modify any of your personal data on your device).
6. Click "Open" when installed.
7. Click the "More" button on the bottom right of the App, then "Setup".
8. Toggle on the Push Categories that are applicable for you.



Don't forget to like us on Facebook! 

Find out more at [www.skoolbag.com.au](http://www.skoolbag.com.au)

*Skoolbag delivers school notices directly to parents and students*





## School Opal Card

As part of our campaign against fare evasion, and our on-going commitment to provide the level of service needed to transport students to and from your school, Busways conducts regular checks of School Opal card.

**All students must be in possession of a valid Opal card or pay a fare.**

**Students in possession of an Opal card must also tap on/off with their card when boarding our buses.**

This is important, because the Opal data collected determines the level of service we are able to provide to your school. If students don't tap on and off, the services will appear underutilised and may be considered for cancellation based on low passenger numbers.

To apply for a School Opal card or to report a lost or stolen card, go online to [www.opal.com.au/en/about-opal/opal-for-school-students/](http://www.opal.com.au/en/about-opal/opal-for-school-students/)

Students who are ineligible for School Opal will need to purchase a Child/Youth Opal card or pay a fare to travel on our buses.

Thank you in advance for your assistance and support.







ST MARYS CONVENT FOOTBALL CLUB

## WANT TO PLAY SOCCER?

Come and play for your local team

Located at Myrtle Road Claremont Meadows

Club History est. 1961

One of the founding members of Nepean

Football Association

U6's to All Age available



**JOIN OUR FACEBOOK PAGE FOR UPDATES AND  
CLUB INFORMATION**

[www.facebook.com/StMarysConventFC/](http://www.facebook.com/StMarysConventFC/)

[stmarysconventsc@gmail.com](mailto:stmarysconventsc@gmail.com)

0404 092 087 (Steve)





**Werrington Public School**  
**Update student information**  
*(Only complete information to be changed)*

**Family name:** \_\_\_\_\_

**Child's given name:** \_\_\_\_\_ **Class** \_\_\_\_\_

Change of address: \_\_\_\_\_

\_\_\_\_\_ Post Code \_\_\_\_\_

Change of home phone number \_\_\_\_\_

Mother's work phone number \_\_\_\_\_

Mobile number \_\_\_\_\_

Father's work phone number \_\_\_\_\_

Mobile number \_\_\_\_\_

Emergency contact # 1: \_\_\_\_\_

Phone number (02) \_\_\_\_\_

Mobile number \_\_\_\_\_

Relationship to student \_\_\_\_\_

Emergency contact # 2: \_\_\_\_\_

Phone number (02) \_\_\_\_\_

Mobile number \_\_\_\_\_

Relationship to student \_\_\_\_\_

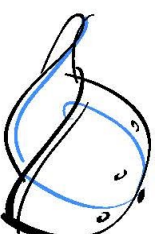


## Uniforms

School uniforms are available in all sizes

Caps are one size

Hats are available in sizes 55cm, 57cm and 59cm



Child's Name \_\_\_\_\_

Class: \_\_\_\_\_

Item	Item Cost	Size	Quantity	Cost \$	Date Supplied Office use only
Lemon Polo Shirt	\$20				
Sport Shirt	\$30				
Shorts	\$20				
Fleecy Track Pants	\$20				
Fleecy Jacket	\$20				
Fleecy Sloppy Joe	\$20				
Sport Jacket	\$40				
Sport Track Pants	\$30				
Cap – one size	\$ 7	NA			
Bucket Hat	\$ 7	Red, Blue, Green, Yellow			
Hat - broad brimmed 55cm,57cm,59cm	\$ 7				
Scrunchie	\$3 for 1 \$5 for 2	NA			
Dress	\$45				
<b>Total cost of uniforms</b>				<b>\$</b>	

Office use only  
Uniforms supplied by: